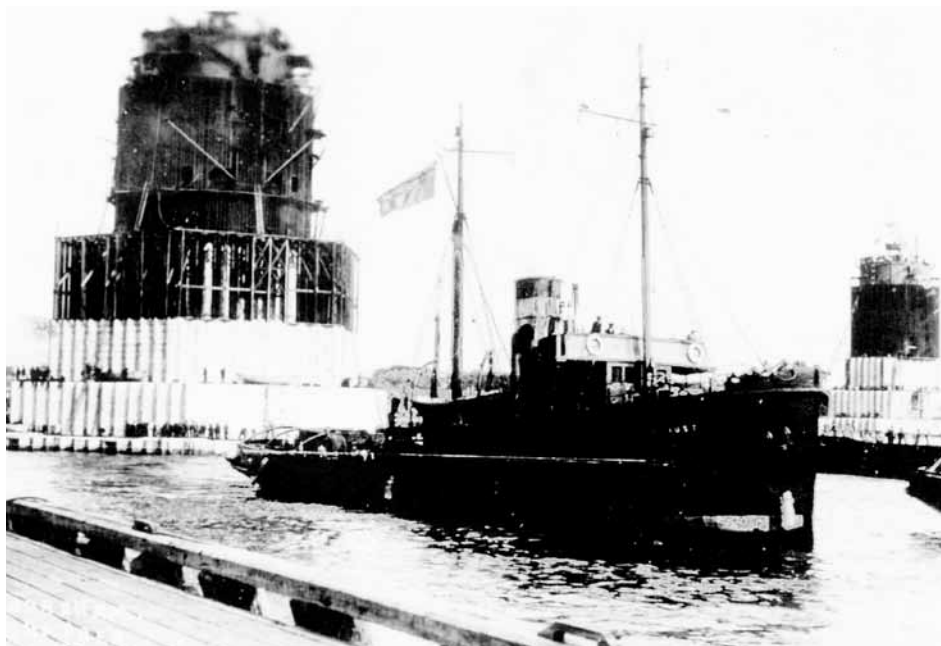


# Bembridge Parish News

---



*The 'Nab Tower' under tow by the Tug 'St Just'*

## BEMBRIDGE PARISH NEWS

SERVES

THE PARISH CHURCH • THE CATHOLIC CHURCH • THE METHODIST CHURCH

*Please inform the clergy of sick persons and other needs for visiting and prayers*

VICAR – Canon Andrew Menniss

☎872175 – vicar@bembridge.com

ASSISTANT CURATE – The Rev'd Linda Bushell

☎400261 – curate@bembridge.com

METHODIST MINISTER – c/o Rev. Bob Boyce

☎873785/07546505286 – r.b.boyce@btinternet.com

CATHOLIC PRIEST – Fr. Anthony Glaysher

☎562171

Editor: Anna Driver, 1 The Ruskins, Kings Road, Bembridge. PO35 5NY ☎873283 – annadriver@talktalk.net

*Copy deadline - 8th of the preceding month*

Distribution Secretary: Mrs Jenny Austen, 31 Beachfield Road ☎872701 – jenny@compkrim.demon.co.uk

Business & Adv. Manager: Mrs Olive Light, 1 Trelawny Way, PO35 5YE ☎874218 – mlight1485@aol.com

---

**JANUARY 2012**

**45p**

## Let's face the music and dance!

*'There may be trouble ahead.  
But while there's moonlight and  
music and love and romance,  
Let's face the music and dance!'*

So sang Fred Astaire in the 1936 Hollywood musical 'Follow the Fleet.' A sentiment that seems especially appropriate as we contemplate the beginning of 2012. Because if there is anything that politicians and economists seem to agree about, it's that there will be trouble ahead. It looks like 2012 is going to be a difficult year.

So how are we going to best cope with the trouble ahead? What resolution might we make for this New Year? Will we be able to *'face the music and dance'*?

Throughout human history people have discovered the wisdom of turning to God in times of trouble. And perhaps a resolution to sing Fred Astaire's song when things get tough might help us to do that. Because in the words, *'moonlight and music and love and romance,'* there is a reminder of all that God does for us.

*Moonlight* reminds us of the beauty and wonder of God's creation, something we can enjoy whatever the economic situation. *Music* reflects the presence of God's Holy Spirit, which, like our favourite tune, has the power

to lift our spirit when we are feeling low. *Love* is the essence of Jesus, who showed us that each one of us is loved and valued by God whether we are rich or poor. And *romance* points to the pleasure of good relationships with our families and friends which can keep us going through hard times.

The *'moonlight and music and love and romance'* of God can help us through the toughest of times. But turning to God will not suddenly make all our problems go away. What it will do though is give us the inner strength to cope. And more than that, it will give us the wider vision to see that it is not money and possessions that give genuine satisfaction. That will only flow from love and faith in God.

So why not resolve that if things are difficult this year you will sit quietly and allow the words of that song to play through your mind. As they do open your heart to allow God to strengthen and reassure you.

Then you will be able to *'face the music and dance'*, because you will be dancing with God!

With love and every blessing for the  
New Year.



# The Prayer Room

On Wednesday, 7<sup>th</sup> December we dismantled the Prayer Room.

St. Luke's had been transformed into a sanctuary where many spent time in quiet reflection. From the different local Churches they came. The curious came. Shoppers came. Young and old they came. A few spent the whole night seeking God's face. Prayer was offered for our friends and families, for our locality and for the wider world. A blessed time indeed. There were many suggestions and helps for praying: Creative, 'crafty' suggestions, recent news items and local maps and 1 hour prayer guides. But most popular of all was the inner sanctuary.



Where you could just sit in front of the 3 large candles signifying Father, Son and Holy Spirit, bathed in the presence of God. Particularly beautiful after dark. The 'Solace' duo came bringing blessing and a 'silent communion' was powerful stuff indeed. So where next?

*If you have any ideas / comments do let Andrew Menniss know, (his address is at the front of magazine)*

---

## A CHANCE MEETING

In October we took a holiday with a small group. On arrival in Istanbul we checked into our Hotel and after unpacking proceeded to the bar where we met several of our travelling companions. Inevitably a lady asked me 'where do you come from'. The Isle of Wight I replied to which the lady said I was brought up on the Isle of Wight where my father was a Vicar. Oh I replied where, Bembridge she said to which I replied 'Revd Sims Williams' and she said yes to which I replied that he prepared me for confirmation. Next came the fact that he went at Christmas, on the Lifeboat, to the Nab Tower to sing Carols when the Christmas gifts were delivered to which I replied – yes I went to. For the rest of the trip we shared a table for meals and became friends. Alice Adams, as she now is, hopes to visit the Island next year when she can revisit Holy Trinity and meet Andrew and everyone. Small world....

Terry Weaver.

## Bembridge RNLi Lifeboat Guild News



Bembridge's all-weather lifeboat, "*Alfred Albert Williams*" was launched at 1225 on the 21<sup>st</sup> November to assist an 8.5 metre RIB ( rigid inflatable boat) with a broken steering linkage, 20 miles south of St Catherine's Point, the most southerly point of the Island. With a crew of two aboard, the RIB had been on passage to the Channel Islands when the steering arm failed, losing all directional control. Once alongside the casualty, it was found that the position of the towing eye on the RIB made it too difficult to attach a line from the lifeboat's deck. The crew, under the command of Coxswain Steve Simmonds solved the problem by lowering the lifeboat's stern ramp with the RIB positioned alongside, making it possible to get low enough to the water to

enable the towline to be connected. Once secured, the RIB was taken at best towing speed back to Haslar Marina, Gosport, arriving at 1530. The lifeboat was back on station ready to be re-housed at 1600.

### **Guild AGM:**

The Guild's Annual General Meeting will take place at Bembridge Village Hall on Wednesday, 25<sup>th</sup> January 2012 at 7pm for 7.30pm start. Light refreshments will be available and everyone is welcome.

### **Come and "Sip our Soup" at the "SOS" Fundraising Days at the Lifeboat Station:**

The annual "SOS" days are to be held on Friday, 27<sup>th</sup> January and Saturday, 28<sup>th</sup> January 2012 at the Lifeboat Station offshore boathouse at Lane End. Friday, 27<sup>th</sup> is set aside for school visits to the station but on Saturday, 28<sup>th</sup> from 11am onwards the boathouse will be open to the public and everyone is welcome to come along. As with last year, there will be another rare opportunity to go aboard and be shown over the lifeboat by members of the crew and Guild and a range of delicious home-made soups with rolls will be available to be sampled. Following the success of last year's book of soups recipes, another excellent Lifeboat Guild recipe book will be for sale, this year featuring delicious cakes and biscuits - not to be missed.



## ***'We'll Always Have Paris'***

Early November, I was very kindly invited to review Bembridge Little Theatre Club's production of 'We'll Always Have Paris'.

The comedy revolves around three English women of "a certain age" who all went to school together, but have all gravitated towards Paris at the same time. There's Nancy, a retired headmistress from Haselmere, Anna, who is recently widowed after years of nursing her sick husband and Raquel, a several timed divorcee obsessed with her new toy boy. Joining them is their wannabe actor handyman Charlot and their none-too-friendly landlady, Madame Boussiron.

The night I went to see was a full house, and an audience of a variety of ages. The set was well laid out, with a brilliant attention to detail. The actors were all tremendously cast, and suited their parts incredibly well. I especially enjoyed the Monopoly scene as it was so easy to relate to and very funny.

Although it is difficult to single out any individuals, Raquel, played by Fiona Gwinnett was absolutely hilarious and had everyone in the audience laughing out loud.

Kim Ball who played Nancy also put on a great performance and was both funny and charming. The role suited her brilliantly. The relations between the three leading ladies were so realistic, like they had known each other for years.

It was a brilliant feel-good play that made the whole audience laugh and leave with a smile on their face.

"I thought it was very good and the acting was superb. I've seen their performances several times before and I imagine I will see them again. They were very well cast and the strength of the play was in the acting"  
John Holloway

"I thought it was brilliant. Very good casting indeed – their usual high quality"  
Angie Haydon

Overall, a truly excellent performance, and I hope to see more of the Bembridge Little Theatre Club productions in the future.

*Sarah Garnham.*

# BEMBRIDGE BOWLING CLUB REPORT

Winter at the Club sees a programme of social events aimed at entertaining members until the greens open again in April. Thanks to all those who put a lot of effort into organising these activities. However not forgotten are Graham Bridger and his team of volunteers who meet every Tuesday morning (and other times) to carry out that routine work which help to keep the greens and facilities at their high standard.

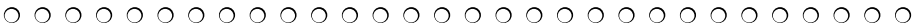
A snippet of news from last summer concerns four players from the Men's 'B' Team. Playing against Ryde Marina 'C' back in July, the quartet of Alan Goater, Mike Davidson, Peter Stevens and Bill Gray found themselves 18-3 shots down after 6 ends. However, they then took control of the game going on to win their rink by 35-21 shots. Whilst such turnarounds are not unknown, what made this memorable was scoring the maximum of 8 shots on the final end. This unique achievement known as a 'Hot Shot' is the equivalent of a 501 nine-darter in darts, a hole-in-one in golf or a 147 in snooker, and entitled the four players to join the world renowned Hot Shot Club. Congratulations!



*The Hot Shot Quartet  
Mike Davidson, Bill Gray, Peter Stevens,  
Team Captain John Woodford and Alan Goater*

Anyone interested in learning more about the Club and its activities should come along to one of the Club's coffee mornings held through the winter on the last in the Saturday of each month, starting at 10.00am or contact Club Secretary, Colin Vines on 874163.

*Steve Tutton*



## THE MAGIC OF PANTOMIME - ALADDIN

This year's pantomime is certainly magical. Wight Island Players are presenting 'Aladdin' in the Village Hall on Friday, Saturday and Sunday, 13th, 14th, 15th January 2012. It is one of the most colourful and favourite stories of all.

Great fun for all ages, come and enjoy the adventures of Aladdin as he hopes to win the heart of the lovely Princess Baldroubador! The genii of the lamp and the slave of the ring add to the magic.

Tickets will be on sale at the Welcome Store, Lane End (Post Office section). Adults £7 Children £4 (No telephone bookings please)

## **BEMBRIDGE AFTERNOON TOWNSWOMEN'S GUILD**

Our Christmas meeting which is always most enjoyable was the more so this year as it is the last one we will be holding. Many messages were read out not only from members but from the Island Federation and the local Guilds.

The Bembridge music groups entertained us beginning with the Recorder Group and a special arrangement of `Angels from the Realms of Glory` written for them by Richard Benger. The Hand Bell group carried on the Christmas Carol theme much to the enjoyment of us all including a young girl from the children's group who meet in the small room of the Village hall - she seemed to be fascinated by the bells. The Holland Brass Quartet ended the concert.

We would like to thank them all for entertaining us over the years at Christmas time - it is always such a joy to hear good live music.

We had `tea` organised by the Evening Townswomen's Guild who made lots of nibbles and extra special cakes and even did the washing up! It was great to have a fuss made of us, so our thanks to Dot and her helpers.

Finally we were able to present a cheque for £500 to the Wessex Cancer Trust (Isle of Wight section). It was started 28 years ago by a voluntary group and its aim is to support cancer patients in a variety of ways including providing transport from the Red Jet to the Southampton General Hospital for treatment, counselling patients and their families, providing some equipment and much more.

Our very last meeting will be on Tuesday 3<sup>rd</sup> January 2012 at 2.15p.m. in the Village Hall and we hope all our members will make a special effort to attend.

# **BEMBRIDGE EVENING TOWNSWOMEN'S GUILD**

The evening started off with the delicious smell of spiced hot punch being prepared by Hilary Haley in the kitchen. It certainly set the proceedings off to a definitely Christmas feel. We welcomed a member of the afternoon guild.

Diana was delighted to report the success of our November coffee morning. We raised £500 to be presented to the Alzheimer's Society Cafe which does such wonderful work here on the Island. Polly went to visit them and gave us a firsthand report of their activities and what a lovely welcome she received.

Dot told us about the enjoyable time some of our members had spent with the afternoon guild providing them with a buffet for their Christmas party. The company was welcoming, it was such a pleasure for us all to be there and the music played by some of our local musicians was truly uplifting. Thank you very much Afternoon Guild for a lovely, lovely afternoon.

Ann gave us the report of the Federation. We came third in the Federation Quiz, congratulations to our team of Nicola, Sheila and Margaret.

Once the business of the meeting was dealt with we were delighted to welcome Val Walsh as our speaker. Her subject was "flowers with a difference" and she demonstrated the most wonderful creations that cost so little money. As she worked on her designs she had us all in stitches. Could you make a flower display without any flowers that would grace any table? Val can. Could you make a fantastic decoration using a glass, a jam-jar and some dried kidney beans? Val can. Could you make a decorative present for a neighbour out of a plastic milk bottle?

Val can. What's more, now, so can the members of Bembridge Evening TG!!! One important thing she taught us was how to gather greenery, so watch out Bembridge, there could be a lot of pruning going on. All the creations Val had made were given to us to raffle. Some really lucky people went home with a lovely flower display.

By this time we were all ready to devour the delicious punch Hilary had made and fatten ourselves up on cake, what a grand evening.

The competition winners were; Blooms: first Juliet Robson, second Annette Halls, and third Polly Watson. Most unusual flower vase: first Gillie Chubb, second Verena Sparrow, third Polly Watson.

Our next meeting will be on January 3rd. this will be a social evening listening to records on Hilary's wind-up gramophone and general games. Please come dressed in a 30/40's fashion.

**If you would like to join us please ring Dot on 872992.**



# St. MICHAEL'S RC CALENDAR

WALLS ROAD, BEMBRIDGE

(Combined Parish of Bembridge and Ryde)

Parish Priest: Fr. Anthony Glaysher

Telephone: (01983) 562171

Parish Office – Tel: (01983) 812127 (weekday mornings)

E-mail: [stmarysryde@aol.com](mailto:stmarysryde@aol.com)

[www.stmarysryde.org](http://www.stmarysryde.org)

## WEEKEND SERVICES ALL YEAR

<b>Saturdays:</b>	6.00 p.m.	<i>Vigil Mass at Ryde</i>
<b>Sundays:</b>	7.45 a.m.	<i>(said) Mass at Ryde</i>
	9.15 a.m.	<i>(sung) Mass at Bembridge</i>
	11.00 a.m.	<i>(sung) Mass at Ryde</i>
	10.00 a.m.	<i>Mass - at both Quarr Abbey and St. Cecilia's Convent</i>
<b>Tuesdays:</b>	10.00 a.m.	<i>Rosary &amp; Exposition of the Blessed Sacrament</i>
	10.30 a.m.	<i>(said) Mass at Bembridge</i>

### News from St Michael's

Firstly, sincere good wishes to all our readers in Bembridge, for a Happy and Peaceful New Year.

The Taize Group will continue to meet in January at St. Michaels and will be on 10th January, from 7 – 8 pm. A restful hour of song, prayer and meditation, to which all are welcome. As usual the music will be provided by our duo, Solace.

*Angela Haydon.*



# HOLY TRINITY CALENDAR

Vicar: Canon Andrew Menniss (01983) 872175

E-Mail: vicar@bembridge.com

Assistant Curate: The Reverend Linda Bushell (400261)

E-Mail: curate@bembridge.com

website: [www.bembridgeholyltrinity.org.uk](http://www.bembridgeholyltrinity.org.uk)

## SUNDAY SERVICES

8.00am Holy Communion at St Luke's (BCP)  
 10.30am Parish Communion with STEPPING STONES for children at Holy Trinity (Common Worship)

1st SUNDAY OF EACH MONTH  
 10.30am Thank God it's Sunday! Worship for all ages.

## JANUARY 2012

**SUNDAY 1st The 2nd SUNDAY of CHRISTMAS**  
**Naming and Circumcision of Jesus**  
 8.00am Holy Communion (BCP) at St Luke's  
 10.30am Parish Communion  
 with Stepping Stones  
 (NO THANK GOD IT'S SUNDAY in January)

**Monday 2nd** No Monday Meditation

**Wednesday 4th** 9.30am Matins at St Luke's  
 10.00am Holy Communion at St Luke's  
 MU Corporate Communion

**SUNDAY 8th THE BAPTISM OF CHRIST**  
 8.00am Holy Communion (BCP) at St Luke's  
 10.30am Parish Communion  
 with Stepping Stones

**Monday 9th** 9.00am Monday Meditation

**Wednesday 11th** 9.30am Matins at St Luke's  
 10.00am Holy Communion at St Luke's

**SUNDAY 15th The 2nd SUNDAY of EPIPHANY**  
 Normal Sunday Services  
 3.00pm Baptism

**Monday 16th** 9.00am Monday Meditation

**18th – 25th The Week of Prayer for Christian Unity**

<b>Wednesday</b>	<b>18th</b>	9.30am 10.00am	Matins at St Luke's Holy Communion at St Luke's
<b>Saturday</b>	<b>21st</b>	7.00pm	Ecumenical Social in The Village Hall
<b>SUNDAY</b>	<b>22nd</b>	<b>The 3rd SUNDAY of EPIPHANY</b>	
		8.00am 10.30am	Holy Communion (BCP) at St Luke's Parish Communion with Stepping Stones
		6.00pm	Ecumenical Service at St Michael's Roman Catholic Church
<b>Monday</b>	<b>23rd</b>	9.00am	Monday Meditation
<b>Wednesday</b>	<b>25th</b>	<b>THE CONVERSION OF ST PAUL</b>	
		9.30am 10.00am	Matins at St Luke's Holy Communion at St Luke's
<b>SUNDAY</b>	<b>29th</b>	<b>The 4th SUNDAY of EPIPHANY</b>	
		Normal Sunday Services	
<b>Monday</b>	<b>30th</b>	9.00am	Monday Meditation



**BAPTISM**                      10th December              Edward JUDE

**THANKSGIVING FOR MARRIAGE**  
18th December              Laura and Christopher STIRLING

**FUNERAL**                      8th December              May SHAW



## *Holy Trinity Mothers' Union*

Wed 4th Jan                      10.00am                      Corporate Communion at St Luke's  
Thu 12th Jan                      2.30pm                      Branch Meeting at The Cloisters  
– Speaker Mrs Margaret Salkeld:  
Poetry Readings

I wish you all a very healthy and Happy New Year.

*Sheila Wheeler – Branch Leader (874065)*



# The Methodist Church

*A warm welcome in the name of Jesus*

Pastor Bob Boyce. (01983) 873785  
E-mail: [bobbyce@btinternet.com](mailto:bobbyce@btinternet.com)

## **JANUARY CALENDAR**

### **MIDWEEK EVENTS AND SUNDAY WORSHIP**

Sun 1st	10.30 am	Heather Dicker (Local Preacher)
Sun 8th	10.30 am	Mrs June Parsons (Local Preacher)
	4.00 pm	Grapevine Family Service with Communion
Sun 15th	10.30 am	Pastor Bob Boyce, Covenant Service
	3.30pm to 5.30pm	Pebbles Plus (A relaxed family event)
Sun 22nd	10.30 am	Grapevine Family Service
	6.30pm	Inspire Youth Group, 13+ years of age
Sun 29th	10.30am	Local Arrangement
	4.00pm	Grapevine, Refresh: Prayer and Praise

### **ACTIVITIES AND GROUPS IN THE CHURCH**

Alternative Tuesday in month	10.00 am	Church Friendship Walk Contact 873393
Every Wednesday in month	10.00 am 2.45 pm 6.30 pm	Seekers Together Wednesday Welcome Rock Solid (co-sponsored and supported by Holy Trinity)
	8.00 pm	Nite Lite
Alternative Thursday in month	7.30 pm	Manse Bible Study at 45 Crossway
First Thursday in month	3.30 - 5.30 pm	Pebbles
First Friday in month	10.00 am 7.45 pm	Coffee morning Grapevine Prayer Meeting

*Our church is situated in Foreland Road*

# The Methodist Noticeboard

## A New Year Message

Another year I enter  
its history unknown;  
Oh, how my feet would tremble  
To tread its paths alone!  
But I have heard a whisper,  
I know I shall be blest;  
"My presence shall go with thee,  
and I will give thee rest."

What will the New Year bring me?  
I may not, must not know;  
Will it be love and reapture,  
Or loneliness and woe?  
Hush! Hush! I hear His whisper;  
I surely shall be blest;  
"My presence shall go with thee,  
and I will give thee rest."

## **ECUMENICAL SOCIAL**

the theme of the evening  
"Olympics"

On Saturday 21st January  
at 7.00pm in the Village Hall.

Tickets £3.50  
(to include refreshments & a drink)

An opportunity for the  
village churches to come together  
and have some fun.

## Auction of Promises

Youth groups Rock Solid  
and Nite Lite will be holding  
the above fun auction for their  
chosen charity  
on Wednesday 25th January  
from 6.30pm to 8.00pm in  
Bembridge Methodist Church.

Never been to one,  
then why not come along  
and enjoy the fun!

## BEMBRIDGE WINDMILL WI

In common with most WIs Bembridge Windmill WI held its Annual Meeting in November. This is the time when the Committee and President are elected. It was lovely to see so many members present and Ginny welcomed a new member and two visitors.

Our President of some four years was standing down this year to, as she put it, give someone else a chance and to bring a new voice and leadership to our WI. Jeanie Gully will be taking on the role for the coming year with an enhanced Committee.



The nature of the meeting does mean that there is a lot of formal business to get through and our WI Advisor was on hand to help us through it. Once this was over there was the opportunity to talk about the newly set up Hobby Group. Some of their handiwork was on show, including fabric Christmas stockings and a wide variety of lavender bags. These were quickly snapped up as being “just the thing for a Christmas present”. There was also a beautiful selection of handmade cards.

However the “piece de resistance” has to be our knitted bunting! Festive or what! This is an ongoing project and everyone can have a go. It was explained that the hobby group would meet regularly in the New Year and this would give anyone who wanted, the opportunity to learn a new skill. Some meetings would be learning and sharing and some would be “getting on with it” to create stock for future fundraising events.

Carol entertained us with a quiz about chocolate. Rather surprisingly all the ladies seemed to know quite a lot about chocolate! Unfortunately there was none to share!!

Our January meeting will be held on 16<sup>th</sup> when we plan to hear more about the current year’s charity and to make a presentation of our donation.

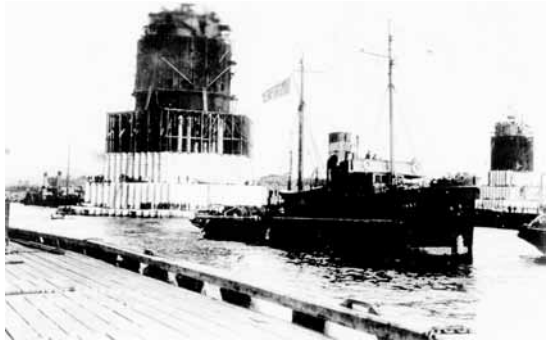
We meet in the Cloisters at 7.30pm and if you would like to know more about our WI please contact Ginny on 874246 or Sarah on 873873. They will love to tell you all about us and the activities planned for next year.



## The Nab Tower

Few Bembridge people have been close to the Nab Tower that sits on the seabed off our coastline, its light and foghorn warning mariners of the Nab rocks that lie just beneath the sea nearby.

This immense construction has been there since 1920. It replaced the Nab lightship which had been on the site since 1812. Its light had become unsuitable for the requirements of the bigger liners.



***The tug 'St Just' leaving Southwick with the 'Nab Tower' in tow on its journey to its new home sited off Bembridge.***

***A twin-funnel paddle-steamer brings up the rear.***

***The other tower can be seen far right.***

The Tower was originally built during the First World War at Southwick, near Shoreham. The Admiralty had planned to build eight towers that were to be placed in a line across the English Channel, linked together with nets to try to stop the German submarines from entering the Channel, as they had been doing and sinking many of our ships bringing urgent supplies into Britain.

Before this ploy could be put into place, the War ended, leaving two almost completed towers at Southwick, with the Admiralty at a loss to know what to do with them.

The Towers were completed in 1919, so then it was decided to replace the Nab lightship with one of the Towers.

Sunday 12<sup>th</sup> September 1920 was a very calm day as the Tower was towed out of Shoreham Harbour to its new home near the Nab Rocks. The Tower was successfully sunk to the sea bed about 12 fathoms down and so became a permanent feature of our coastline.

Trinity House lighthouse keepers manned the new Nab Tower; four men did a two month spell of duty and then one month off.

*continued from page 24*

The keepers received a regular monthly visit (weather permitting) from a Chaplin of the Isle of Wight Missions to Seamen.

At Christmas times Bembridge lifeboat would take presents to the Keepers given by the people of Bembridge. The Bembridge Vicar usually also made the trip. Often it was not possible to land due to the weather conditions, so they had to go again on another day. This annual event only stopped when the Nab became automated.

P.S. A use of the second Tower could not be found so it was demolished.

John Woodford



*The Nab Lightship in Portsmouth Dockyard*

---

---

**A date for your diary**

The Friends of Holy Trinity  
will be holding a Quiz Night  
on Saturday 18th February  
at The Village Inn  
7.30 pm for an 8 pm prompt start.  
More details next month.

# Bembridge Horticultural Society

[www.bembridgeblooms.org.uk](http://www.bembridgeblooms.org.uk)

## MEETINGS:

6th January	Eric Sieler	Travels in Syria
20th January	Marian Irving	Flower arranging

Happy New Year everyone hope you have survived in one piece after the festivities.

Its now time to browse through the gardening catalogues that have been dropping in the letter box!

..... Do we need any more seeds ? ..... Do we want any plug plants ?  
..... Do we need all the wonderful new products that make life easier ? .....  
We could spend *pounds* at the first look at all the colourful displays and various must haves  
– I think a couple of days thinking time then a long browse and a nice *cuppa* on a horrible day will sort it out.

Check the plants over wintering in the greenhouse or shed, remove all dead leaves and debris that has collected round the plants.

A little light digging for new beds and borders, also fork around plants in the garden and get rid of any weeds that have decided to come up early.

Plant out bulbs that have been indoors over the holiday.

Inspect the ponds and pools for any damage if it's been very frosty.

Give shrubs and plants, on a mild day, a bit of a mulch to protect them from frosts.

Sow peas and broad beans and sow flower seeds in propagators for an early start.

Plan a new herb garden near the kitchen.

Looking out of the window whilst writing this (December) I can see flowers that should not be in flower and shrubs thinking it's spring, I hope they survive ready for the summer.

Feed the little birds and keep water bowls topped up.

A gentle start in the garden planning snipping and a general tidying up as you wander round on a nice day.

### ***The Windflower Fairy***

While human folk slumber, the fairies espy stars  
without number sprinkling the sky.  
The winters long sleeping like night time is done,  
But day stars are leaping to welcome the sun  
Star like they sprinkle the wild wood with light  
Countless they twinkle, the windflowers white.

*Cicely Mary Barker*  
**"Happy Gardening"**

